

## FEATURES & SPECIFICATIONS

**INTENDED USE** — LBL LED wraparound provides a digital lighting platform to deliver general ambient lighting for surface-mount applications. The LED system delivers long life and excellent color to ensure a quality, low-maintenance lighting installation. Ideal for closets, storage rooms, hallways, stairwells and offices.

**CONSTRUCTION** — Metal parts are die formed from code-gauge steel. Prismatic diffuser is 100% acrylic with sonically welded luminous ends. Continuous side flanges on fixture body provide light trap and continuous diffuser support to prevent accidental opening and simplify maintenance.

Finish: Five-stage iron phosphate pretreatment assures superior paint adhesion and rust resistance.

Painted parts finished with high-gloss, high-reflectivity baked white polyester enamel (low VOC).

**OPTICS** — Curved prismatic diffuser with linear side prisms and highly transmissive overlay minimizes lamp image and provides high-angle brightness control. Luminous end plates soften appearance for improved aesthetics.

**ELECTRICAL** — Long-life LEDs, coupled with high-efficiency drivers, provide superior quantity and quality of illumination for extended service life. 90% LED lumen maintenance at 50,000 hours (L90/50,000). The LEDs have a CRI of 82.

eldoLED driver options deliver choice of dimming range and choices for control, while assuring flicker-free, low-current inrush, 89% efficiency and low EMI.

Step-level dimming option allows system to be switched to 50% power for compliance with common energy codes while maintaining fixture appearance.

**CONTROLS** — Pair the LBL with the fixture mount Sensor Switch LSXR sensor for additional energy savings when the space is unoccupied. The LSXRHL sensor dims the fixture down to a low-level setting when there is no occupancy. This option is ideal for stairwells, back rooms, and closets due to the low occupancy level in those spaces.

Optional nLight® embedded controls continuously monitor system performance, allow for constant lumen management / compensation function, facilitate simple “plug-and-play” network and controls upgrading via Cat-5 cable. Ballast disconnect provided where required to comply with US and Canadian codes.

**LISTINGS** — CSA certified to meet U.S. and Canadian standards. Damp listed.

DesignLights Consortium® (DLC) Premium qualified product. Not all versions of this product may be DLC Premium qualified. Please check the DLC Qualified Products List at [www.designlights.org/QPL](http://www.designlights.org/QPL) to confirm which versions are qualified.

**WARRANTY** — 5-year limited warranty. Complete warranty terms located at

[www.acuitybrands.com/CustomerResources/Terms\\_and\\_conditions](http://www.acuitybrands.com/CustomerResources/Terms_and_conditions)

**Note:** Actual performance may differ as a result of end-user environment and application.

All values are design or typical values, measured under laboratory conditions at 25 °C.

Specifications subject to change without notice.

|                |
|----------------|
| Catalog Number |
| Notes          |
| Type           |

### Low-Profile Curved-Basket LED Wraparound

# LBL4



4' LENGTH, NARROW HOUSING  
LED



eldoLED®



### CSA+ Capable Luminaire

This item is an A+ capable luminaire, which has been designed and tested to provide consistent color appearance and out-of-the-box control compatibility with simple commissioning.

- All configurations of this luminaire meet the Acuity Brands' specification for chromatic consistency
- This luminaire is part of an A+ Certified solution for nLight® control networks when ordered with drivers marked by a **shaded background**\*
- This luminaire is part of an A+ Certified solution for nLight control networks, providing advanced control functionality at the luminaire level, when selection includes driver and control options marked by a **shaded background**\*

To learn more about A+, visit [www.acuitybrands.com/aplus](http://www.acuitybrands.com/aplus).

\*See ordering tree for details

# LBL4 LED Wraparound



A+ Capable options indicated by this color background.

## ORDERING INFORMATION

Lead times will vary depending on options selected. Consult with your sales representative.

**Example:** LBL4 4000LM 80CRI 35K MIN10 GZT MVOLT

| LBL4 |             | Lumens <sup>1</sup> |             | CRI   |        | Color temperature |        | Minimum Dimming Level |                                  | Control |                       | Voltage |                   |
|------|-------------|---------------------|-------------|-------|--------|-------------------|--------|-----------------------|----------------------------------|---------|-----------------------|---------|-------------------|
| LBL4 | 4' LED wrap | 3000LM              | 3000 lumens | 80CRI | 80 CRI | 30K               | 3000 K | MIN10                 | Dims to 10% <sup>2</sup>         | GZT     | Generic 0-10V Dimming | MVOLT   | 120-277V          |
|      |             | 4000LM              | 4000 lumens |       |        | 35K               | 3500 K | MIN1                  | Dims to 1% <sup>3</sup>          |         |                       | 347     | 347V <sup>5</sup> |
|      |             | 4800LM              | 4800 lumens |       |        | 40K               | 4000 K | NODIM                 | On/off, non-dimming <sup>4</sup> | ZT      | eldoLED 0-10V dimming |         |                   |
|      |             | 6000LM              | 6000 lumens |       |        | 50K               | 5000 K | SLD                   | Step-level dimming <sup>4</sup>  | NLIGHT  | nLight enabled        |         |                   |
|      |             | 7200LM              | 7200 lumens |       |        |                   |        |                       |                                  |         |                       |         |                   |

| Emergency Options |   | Lumen Management |                            | Occupancy Control |  | Occupancy Sensor Technology |                  | Options |                         |
|-------------------|---|------------------|----------------------------|-------------------|--|-----------------------------|------------------|---------|-------------------------|
| EL7L              | 700 nominal lumen battery pack (Noncompliant with CA T20) <sup>6</sup>                            | (blank)          | None                       | LSXRHL            | Sensor Switch <sup>®</sup> fixture mount sensor with High/Low occupancy operation <sup>8,9</sup> | PIR                         | Passive Infrared | USPOM   | US Point of Manufacture |
| EL14L             | 1400 nominal lumen battery pack (Noncompliant with CA T20) <sup>6</sup>                           | CL80             | Constant lumen output, 80% | LSXR10            | Sensor Switch <sup>®</sup> fixture mount sensor with on/off occupancy operation <sup>8</sup>     |                             |                  |         |                         |
| E10WLCP           | EM Self-Diagnostic battery pack, 10W Constant Power, Certified in CA Title 20 MAEDBS <sup>6</sup> |                  |                            |                   |  |                             |                  |         |                         |
| EMG               | for use with nLight on generator supply EM power <sup>7</sup>                                     |                  |                            |                   |  |                             |                  |         |                         |

## ORDERING INFORMATION

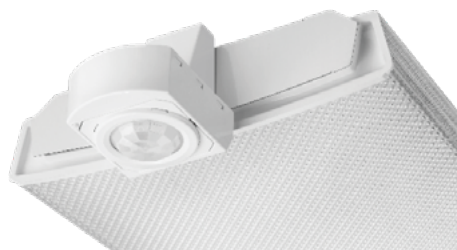
| Catalog number           | UPC          | Description       | Lumens | Color temperature | Lens type             | Voltage | Wattage <sup>2</sup> | Pallet qty | Standard carton qty. |
|--------------------------|--------------|-------------------|--------|-------------------|-----------------------|---------|----------------------|------------|----------------------|
| LBL4 LP835 <sup>10</sup> | 190887819199 | 4' LED Wraparound | 4,188  | 3500 K            | Patterned #12 acrylic | 120-277 | 32                   | 56         | 1                    |
| LBL4 LP840 <sup>10</sup> | 190887819359 | 4' LED Wraparound | 4,253  | 4000 K            | Patterned #12 acrylic | 120-277 | 32                   | 56         | 1                    |
| LBL4 347 LP835           | 190887856682 | 4' LED Wraparound | 4,188  | 3500 K            | Patterned #12 acrylic | 347     | 32                   | 56         | 1                    |
| LBL4 347 LP840           | 190887856705 | 4' LED Wraparound | 4,253  | 4000 K            | Patterned #12 acrylic | 347     | 32                   | 56         | 1                    |

### Notes

- 1 Approximate lumen output.
- 2 Requires GZT control option.
- 3 Requires GZT, ZT, or NLIGHT control.
- 4 Not available with Control or Sensor Options.
- 5 Not available with SLD option.
- 6 Not available with 7200LM option.
- 7 nLight EMG option requires a connection to existing nLight network. Power is provided from a separate N80 or N100 enabled fixture. Requires NLIGHT.
- 8 Requires MIN1, ZT and PIR options.
- 9 Dims to approximately 10% light output when unoccupied.
- 10 Product in stock.

# LBL4 LED Wraparound

| Performance Data |        |             |     |
|------------------|--------|-------------|-----|
| Lumen Package    | Lumens | Input Watts | LPW |
| 3000LM 80CRI 30K | 3167   | 25.6        | 124 |
| 3000LM 80CRI 35K | 3237   | 25.6        | 127 |
| 3000LM 80CRI 40K | 3288   | 25.6        | 129 |
| 3000LM 80CRI 50K | 3409   | 25.6        | 133 |
| 4000LM 80CRI 30K | 4097   | 32.4        | 126 |
| 4000LM 80CRI 35K | 4188   | 32.4        | 129 |
| 4000LM 80CRI 40K | 4253   | 32.4        | 131 |
| 4000LM 80CRI 50K | 4410   | 32.4        | 136 |
| 4800LM 80CRI 30K | 4695   | 40.5        | 116 |
| 4800LM 80CRI 35K | 4799   | 40.5        | 119 |
| 4800LM 80CRI 40K | 4874   | 40.5        | 120 |
| 4800LM 80CRI 50K | 5053   | 40.5        | 125 |
| 6000LM 80CRI 30K | 5968   | 49.7        | 120 |
| 6000LM 80CRI 35K | 6101   | 49.7        | 123 |
| 6000LM 80CRI 40K | 6196   | 49.7        | 125 |
| 6000LM 80CRI 50K | 6424   | 49.7        | 129 |
| 7200LM 80CRI 30K | 7066   | 62.0        | 114 |
| 7200LM 80CRI 35K | 7224   | 62.0        | 117 |
| 7200LM 80CRI 40K | 7336   | 62.0        | 118 |
| 7200LM 80CRI 50K | 7606   | 62.0        | 123 |



| Sensor Switch LSXRHL Sensor |  |
|-----------------------------|--|
| <b>Lens type:</b>           | <b>10</b> - Low Mount 360° coverage                        |
| <b>Dimming:</b>             | <b>HL</b> - High/Low Occupancy operation                   |
| <b>Min Dim Level:</b>       | <b>3V</b> - approximately 10% light output when unoccupied |
| <b>Time Delay:</b>          | <b>5M</b> - 5 minutes                                      |

### How to Estimate Delivered Lumens in Emergency Mode

Use the formula below to estimate the delivered lumens in emergency mode.

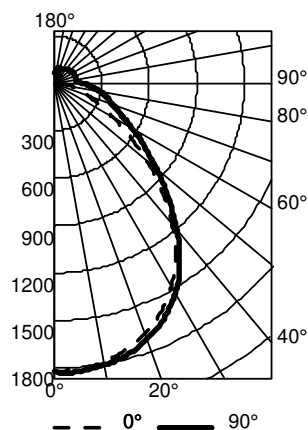
$$\text{Delivered Lumens} = 1.25 \times P \times \text{LPW}$$

P = Output power of emergency driver. P = 10W for E10WLCP option.

LPW = Lumen per watt rating of the luminaire. LPW information available in Performance Data section.

## PHOTOMETRICS

### LBL4 4800LM 80CRI 35K



| CP Summary |      |      |
|------------|------|------|
|            | 0°   | 90°  |
| 0°         | 1823 | 1823 |
| 5°         | 1813 | 1828 |
| 15°        | 1744 | 1776 |
| 25°        | 1594 | 1640 |
| 35°        | 1332 | 1384 |
| 45°        | 958  | 1020 |
| 55°        | 576  | 693  |
| 65°        | 302  | 464  |
| 75°        | 177  | 343  |
| 85°        | 58   | 233  |
| 90°        | 5    | 177  |

| RFR | Coefficients of Utilization |     |     |     |     |     |     |     |     |     |
|-----|-----------------------------|-----|-----|-----|-----|-----|-----|-----|-----|-----|
|     | pc                          | 80% |     |     | 70% |     |     | 50% |     |     |
|     |                             | pw  | 70% | 50% | 30% | 50% | 30% | 10% | 50% | 30% |
| 0   | 116                         | 116 | 116 | 112 | 112 | 112 | 105 | 105 | 105 |     |
| 1   | 106                         | 102 | 98  | 98  | 95  | 91  | 92  | 89  | 86  |     |
| 2   | 97                          | 90  | 83  | 87  | 81  | 76  | 81  | 77  | 73  |     |
| 3   | 89                          | 80  | 72  | 77  | 70  | 65  | 73  | 67  | 62  |     |
| 4   | 82                          | 71  | 63  | 69  | 61  | 56  | 65  | 59  | 54  |     |
| 5   | 76                          | 64  | 56  | 62  | 54  | 49  | 59  | 52  | 47  |     |
| 6   | 71                          | 58  | 50  | 56  | 49  | 43  | 54  | 47  | 42  |     |
| 7   | 66                          | 53  | 45  | 52  | 44  | 38  | 49  | 42  | 37  |     |
| 8   | 61                          | 48  | 40  | 47  | 40  | 34  | 45  | 38  | 34  |     |
| 9   | 57                          | 45  | 37  | 44  | 36  | 31  | 42  | 35  | 30  |     |
| 10  | 54                          | 41  | 34  | 40  | 33  | 28  | 39  | 32  | 28  |     |

| Zonal Lumen Summary |        |        |           |
|---------------------|--------|--------|-----------|
| Zone                | Lumens | % Lamp | % Fixture |
| 0° - 30°            | 1400   | 29.2   | 29.2      |
| 0° - 40°            | 2229   | 46.4   | 46.4      |
| 0° - 60°            | 3509   | 73.1   | 73.1      |
| 0° - 90°            | 4250   | 88.6   | 88.6      |
| 90° - 120°          | 266    | 5.5    | 5.5       |
| 90° - 130°          | 348    | 7.3    | 7.3       |
| 90° - 150°          | 478    | 10.0   | 10.0      |
| 90° - 180°          | 549    | 11.4   | 11.4      |
| 0° - 180°           | 4799   | 100.0  | 100.0     |

## MOUNTING DATA

Suspension Kit Ceiling Types: F1 for use with most T-bar and screw slot grid ceiling applications. Designed for on-grid and off-grid installations.

F2 for use with recessed or surface-mount horizontal J-box applications.

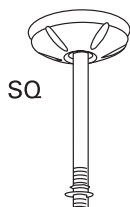
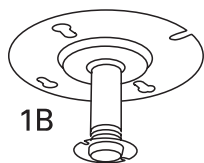
For unit or row installation; surface or suspend mounting.

Individual installation — One double-stem or two single-stem hangers required.

For aircraft cable, one STACG\_, STACGF\_, or STACGE\_ required for each suspension point.

Note: 2' configurations with emergency option cannot be stem mounted.

See ACCESSORIES below for hanging devices.



## DIMENSIONS

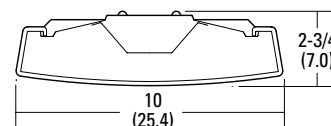
All dimensions are inches (centimeters) unless otherwise noted.

### Specifications

Length: 48 (122.0)

Width: 10 (25.4)

Depth: 2-3/4 (7.0)



All dimensions are inches (centimeters) unless otherwise indicated.